

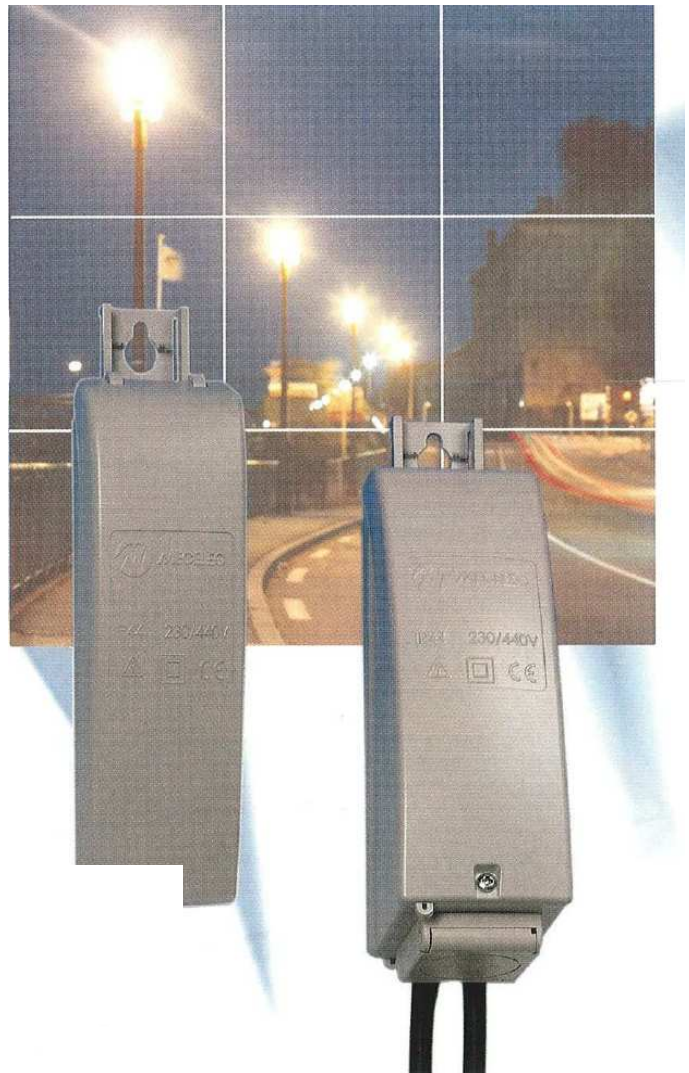
The EVOLUX range combines aesthetics and functionality

Basic model:


To connect and protect public lights installed on walls, on poles, ...

Socket model:

includes a socket in order to connect holiday lights

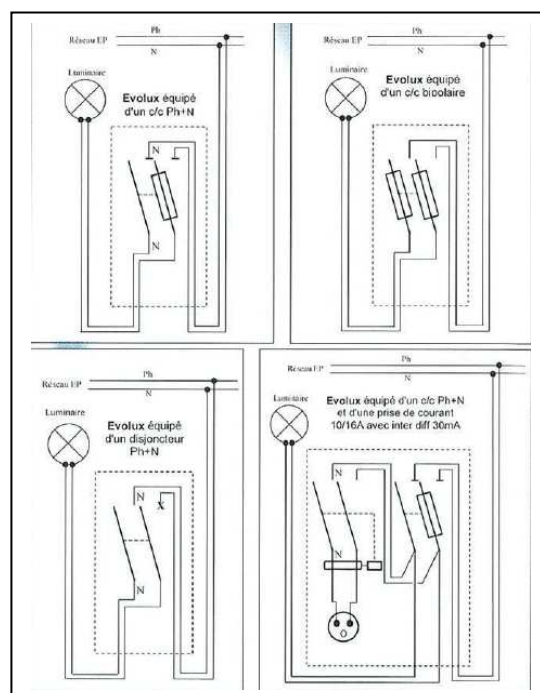
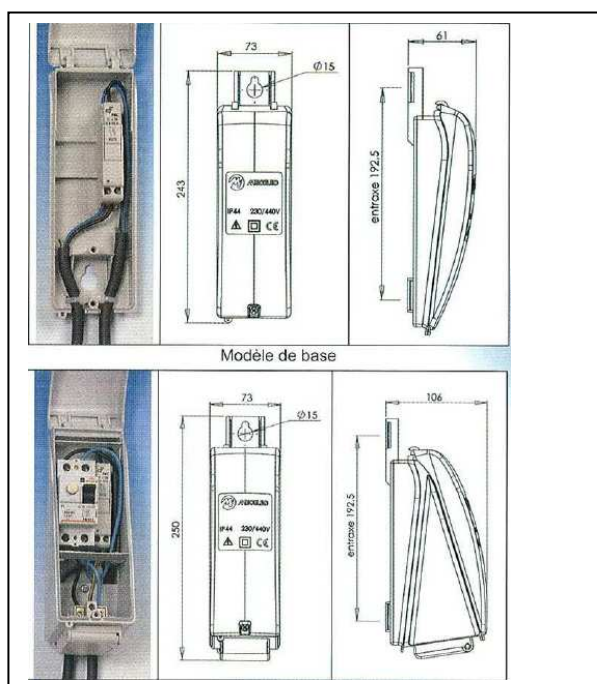


BASIC FEATURES

- IP44, IK08, Class 2 
- Rigid and UV resistant material
- Sealable cover with unlosable screw
- Removable hinge with stable position when open
- Bottom inlet and outlet:
 - Ø11mm (for cable 3x2.5mm²)
 - Pre-cut zone allowing opening with a cutter for larger diameters
- Fastened by 1 or 2 screws (Ø15mm hole) or by plastic or metallic strap.
- For a better look, the bottom fastening point is hidden by the cover.
- Standard colours: beige, light grey, black

SPECIFIC FEATURES

- **Basic model**
 - Standard version delivered with 1 slim fuse-holder (Ph+N)
 - Optimized volume
 - Possibility to add a socket module
 - Maximum capacity: 3 standard modules (w17,5mm x h 59mm)
- **Socket model**
 - Includes a basic module and a spacer with socket and differential circuit breaker 30mA
 - The spacer can be installed and removed on a product already fastened on a wall or a pole
 - Maximum capacity: 3 standard modules (w17,5mm x h 59mm)



CODES

beige	grey	Black	Description	Units/carton
1517102	1517101	1517105	Protection box 1fuse-holder 1module	10
1517202	1517201	1517205	Protection box 1 fuse-holder 2 modules	10
1517302	1517301	1517305	Box with socket 2P+T 16A (NF)	1
1517312	1517311	1517315	Box with socket 2P+T 16A (CE)	1
1515012	1515011	1515015	Spacer with non-diff bipolar MCB	1
1515042	1515041	1515045	Spacer with socket 2P+T 16A (NF)	1
1515052	1515051	1515055	Spacer with socket 2P+T 16A (CE)	1
1515082	1515081	1515085	Spacer	1